



Peltor™ Lite-Com Pro™

Software Programming Manual, MT*H7*403*-50, MT*H7*470*-50

The Sound Solution



Software License

SOFTWARE LICENSE AGREEMENT FOR PELTOR™ Lite-Com Pro™

VERSION 1.3

PLEASE READ THIS SOFTWARE LICENSE AGREEMENT ("LICENSE") CAREFULLY BEFORE USING THE SOFTWARE. BY USING THE SOFTWARE, YOU ARE AGREEING TO BE BOUND BY THE TERMS OF THIS LICENSE. IF YOU ARE ACCESSING THE SOFTWARE ELECTRONICALLY, SIGNIFY YOUR AGREEMENT TO BE BOUND BY THE TERMS OF THIS LICENSE BY CLICKING THE "AGREE/ACCEPT" BUTTON. IF YOU DO NOT AGREE TO THE TERMS OF THIS LICENSE, DO NOT USE THE SOFTWARE AND CLICK "DISAGREE/DECLINE".

1. General. The software, documentation and any fonts accompanying this License whether on disk, in read only memory, on any other media or in any other form (collectively the "Peltor Software") are licensed, not sold, to you by 3M ("3M") for use only under the terms of this License, and 3M reserves all rights not expressly granted to you. The rights granted herein are limited to 3M and its licensors' intellectual property rights in the Peltor Software and do not include any other patents or intellectual property rights. You own the media on which the Peltor Software is recorded but 3M and/or 3M's licensor(s) retain ownership of the Peltor Software itself. Title and intellectual property rights in and to any content displayed by or accessed through the Peltor Software belongs to the respective content owner. Such content may be protected by copyright or other intellectual property laws and treaties, and may be subject to terms of use of the third party providing such content. This License does not grant you any rights to use such content.

2. Permitted License Uses and Restrictions.

A. This License allows you, during the term of this License, to install and use one copy of the Peltor Software on each computer owned or controlled by you for programming Peltor Lite-Com Pro only. To do so, you may place the Peltor Software on your internal network so that multiple computers owned or controlled by you may access and use the Peltor Software at the same time for programming Peltor Lite-Com Pro radio headsets purposes only. You may make one copy of the Peltor Software in machine-readable form for backup purposes only; provided that the backup copy must include all copyright or other proprietary notices contained on the original. In addition to the restrictions stated above, the 3M proprietary libraries included with the Peltor Software are only licensed: (i) for use with the Peltor Software; and (ii) for your personal use or internal business use in connection with Peltor Lite-Com Pro headsets. You may not use the Peltor Software for any other purpose, nor may you link, compile or otherwise combine the Peltor Software with your own programs, modify, rent, lease, lend, sublicense or otherwise redistribute the Peltor software, in whole or in part.

B. Except as and only to the extent expressly permitted by this License, by applicable licensing terms governing use of the Open-Sourced Components, or by applicable law, you may not copy, decompile, reverse engineer, disassemble, modify, create derivative works of, incorporate into or compile in combination with your own programs, rent, lease, lend, sublicense or otherwise redistribute the Peltor Software.

3. Consent to Use of Data. You agree that 3M and its subsidiaries may collect and use technical and related information, including but not limited to technical information about your computer, system and application software, and peripherals, that is gathered periodically to facilitate the provision of software updates, product support and other services to you (if any) related to the Peltor Software, and to verify compliance with the terms of this License. 3M may use this information, as long as it is in a form that does not personally identify you, to improve our products or to provide services or technologies to you.

4. Term of License. The term of this License shall commence upon your installation or use of the Peltor Software and will terminate automatically without notice from 3M upon the next commercial release of the Peltor Software. Your rights under this License will also terminate automatically without notice from 3M if you fail to comply with any term(s) of this License. Upon the termination of this License, you shall cease all use of the Peltor Software and destroy all copies, full or partial, of the Peltor Software.

5. Support and Maintenance. 3M is not obligated to provide any maintenance, technical or other support for the Peltor Software, or any updates to you for the Peltor Software.

6. Disclaimer of Warranties. YOU EXPRESSLY ACKNOWLEDGE AND AGREE THAT USE OF THE PELTOR SOFTWARE IS AT YOUR SOLE RISK AND THAT THE ENTIRE RISK AS TO SATISFACTORY QUALITY, PERFORMANCE, ACCURACY AND EFFORT IS WITH YOU. TO THE MAXIMUM EXTENT PERMITTED BY APPLICABLE LAW, THE PELTOR SOFTWARE IS PROVIDED "AS IS", WITH ALL FAULTS AND WITHOUT WARRANTY OF ANY KIND, AND 3M AND 3M LICENSORS (COLLECTIVELY REFERRED TO AS "3M" FOR THE PURPOSES OF SECTIONS 6 AND 7) HEREBY DISCLAIM ALL WARRANTIES AND CONDITIONS, EITHER EXPRESSED, IMPLIED OR STATUTORY, INCLUDING, BUT NOT LIMITED TO, THE IMPLIED WARRANTIES AND/OR CONDITIONS OF MERCHANTABILITY, OF SATISFACTORY QUALITY, OF FITNESS FOR A PARTICULAR PURPOSE, OF ACCURACY AND OF NON-INFRINGEMENT OF THIRD PARTY RIGHTS, ALL WITH REGARD TO THE PELTOR SOFTWARE. 3M DOES NOT WARRANT AGAINST INTERFERENCE WITH YOUR ENJOYMENT OF THE PELTOR SOFTWARE, THAT THE FUNCTIONS CONTAINED IN THE PELTOR SOFTWARE WILL MEET YOUR REQUIREMENTS, THAT THE OPERATION OF THE PELTOR SOFTWARE WILL BE UNINTERRUPTED OR ERROR-FREE, OR THAT DEFECTS IN THE PELTOR SOFTWARE WILL BE CORRECTED. NO ORAL OR WRITTEN INFORMATION OR ADVICE GIVEN BY 3M OR A 3M AUTHORIZED REPRESENTATIVE SHALL CREATE A WARRANTY. SHOULD THE PELTOR SOFTWARE PROVE DEFECTIVE, YOU ASSUME THE ENTIRE COST OF ALL NECESSARY SERVICING, REPAIR OR CORRECTION. SOME JURISDICTIONS DO NOT ALLOW THE EXCLUSION OF IMPLIED WARRANTIES OR LIMITATIONS ON APPLICABLE STATUTORY RIGHTS OF A CONSUMER, SO THE ABOVE EXCLUSION AND LIMITATIONS MAY NOT APPLY TO YOU.

7. Limitation of Liability. TO THE EXTENT NOT PROHIBITED BY LAW, IN NO EVENT SHALL 3M BE LIABLE FOR PERSONAL INJURY, OR ANY INCIDENTAL, SPECIAL, INDIRECT OR CONSEQUENTIAL DAMAGES WHATSOEVER, INCLUDING, WITHOUT LIMITATION, DAMAGES FOR LOSS OF PROFITS, LOSS OF DATA, BUSINESS INTERRUPTION OR ANY OTHER COMMERCIAL DAMAGES OR LOSSES, ARISING OUT OF OR RELATED TO YOUR USE OR INABILITY TO USE THE PELTOR SOFTWARE, HOWEVER CAUSED, REGARDLESS OF THE THEORY OF LIABILITY (CONTRACT, TORT OR OTHERWISE) AND EVEN IF 3M HAS BEEN ADVISED OF THE POSSIBILITY OF SUCH DAMAGES. SOME JURISDICTIONS DO NOT ALLOW THE EXCLUSION OR LIMITATION OF LIABILITY FOR PERSONAL INJURY, OR OF INCIDENTAL OR CONSEQUENTIAL DAMAGES, SO THE ABOVE EXCLUSIONS OR LIMITATIONS MAY NOT APPLY TO YOU. In no event shall 3M's total liability to you for all damages (other than as may be required by applicable law in cases involving personal injury) exceed the amount of fifty dollars (\$50.00). The foregoing limitations will apply even if the above stated remedy fails of its essential purpose.

8. Export Control. You may not use or otherwise export or re-export the Peltor Software except as authorized by United States law and the laws of the jurisdiction in which the Peltor Software was obtained. In particular, but without limitation, the Peltor Software may not be exported or re-exported (a) into any U.S. embargoed countries or (b) to anyone on the U.S. Treasury Department's list of Specially Designated Nationals or the U.S. Department of Commerce Denied Person's List or Entity List. By using the Peltor Software, you represent and warrant that you are not located in any such country or on any such list. You also agree that you will not use these products for any purposes prohibited by United States law, including, without limitation, the development, design, manufacture or production of missiles or nuclear, chemical or biological weapons. You certify that this Peltor Software will only be used for programming Peltor Lite-Com Pro, and will not be rented, sold, leased, sublicensed, assigned, or otherwise transferred. Further, you certify that you will not transfer or export any product, process or service that is a direct product of this Peltor Software.

9. Government End Users. If the Peltor Software is supplied to the United States Government, the Peltor Software are "Commercial Items", as that term is defined at 48 C.F.R. §2.101, consisting of "Commercial Computer Software" and "Commercial Computer Software Documentation", as such terms are used in 48 C.F.R. §12.212 or 48 C.F.R. §227.7202, as applicable. Consistent with 48 C.F.R. §12.212 or 48 C.F.R. §227.7202-1 through 227.7202-4, as applicable, the Commercial Computer Software and Commercial Computer Software Documentation are being licensed to U.S. Government end users (a) only as Commercial Items and (b) with only those rights as are granted to all other end users pursuant to the terms and conditions herein. Unpublished-rights reserved under the copyright laws of the United States.

10. Controlling Law and Severability. This License will be governed by and construed in accordance with the laws of the State of Minnesota. This License shall not be governed by the United Nations Convention on Contracts for the International Sale of Goods, the application of which is expressly excluded. If for any reason a court of competent jurisdiction finds any provision, or portion thereof, to be unenforceable, the remainder of this License shall continue in full force and effect.

11. Complete Agreement. This License constitutes the entire agreement between the parties with respect to the use of the Peltor Software licensed hereunder and supersedes all prior or contemporaneous understandings regarding such subject matter. No amendment to or modification of this License will be binding unless in writing and signed by 3M. The parties hereto confirm that they have requested that this License and all related documents be drafted in English.

12. Third Party Acknowledgements.

Portions of the Peltor Software utilize or include third party software and other copyrighted material. Acknowledgements, licensing terms and additional disclaimers for such material are contained in the documentation for the Peltor Software or may accompany such material, and your use of such material is governed by their respective terms.

Peltor Lite-Com Pro – Software Programming

Peltor Lite-Com Pro

Peltor Lite-Com Pro is a multifunctional wireless communication headset with a built in programmable communication radio.

The radio is equipped for a maximum of 30 radio channels in the frequency range 403 – 447 MHz or 430 – 470 MHz. There are 38 CTCSS and 83 DCS "sub channels" to enable groups of users to use the same channel without needing to listen to each other.

ⓘ 403 – 470 MHz

The programmer should inform the user about that the user is responsible for obtaining any necessary licences for using the communication radio in the Lite-Com Pro headset!



II 1 G Ex ia IIC T4

The programmer should also inform the user about the urgent necessity to read and understand the user's instructions, which are enclosed with the product, before using the communication radio in the Lite-Com Pro headset in any potentially explosive environment!

The Lite-Com Pro headset is also an excellent hearing protector with level dependent function; listen to the surrounding sounds, but avoid dangerous noise levels.

By using a cable an external communication radio, a telephone or other audio source can also be connected to the headset.

For information about the use of the Lite-Com Pro headset, please study the user's instruction for the product!

1. Included in the Programming Kit



Hardware:

- Peltor Lite-Com Pro USB interface
- Programming cable
- CD with software and this manual

Software:

- Drivers for USB interface.
- Dealer software (Install shield)
- Password

NOTICE !

DO NOT attach the USB interface until you have installed the Software!
See next page for installation instructions!

To access the Peltor Radio Utility Software;
go to Start > Programs > Peltor > Peltor Utility Software > Programming Guide

2. Install the Peltor Dealer Software

- Put the software CD in the computer.
It starts automatically.
- Enter password and proceed.
- When the installation is completed a shortcut to “**Peltor Radio Utility Software**” will appear under **Peltor** under the Windows START button.

Latest software update will be found on the Peltor homepage www.peltor.se/dealer/litecom
For access you need your password.

Any feedback concerning the software or these instructions is appreciated to feedback@peltor.se

3. Connect the USB Interface



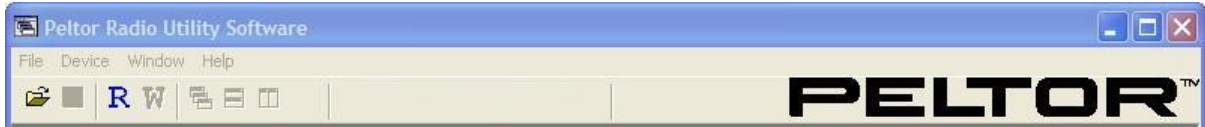
To install the USB interface, please follow the procedure below.
(Valid for Windows XP and Windows Vista)

- Attach the USB interface to a free USB connector on your computer.
- Follow the instructions on the screen.
- If Windows asks if it should search for driver at Windows Update, select “**No...**” and click **Next**.
- Select “Install from a list or a specific location (Advanced)”. Then click **Next**.
- Choose the **CD-drive** to install the USB driver from, and click next.
- There will be a warning message, that this driver is not verified by Windows.
- Select “**Continue Anyway**” and proceed with the installation.
- Follow the remaining instructions and the USB interface should then be ready for use.

6. Read a headset

When a Lite-Com Pro headset is connected, a reading of the memory may be done.

- Use menu [Device] and [Read all] or click directly on the blue [R] symbol.



The reading opens additional menu information.



File	Open Save Save as Exit	Open a settings file from a previous programming Save a settings file from a programming Save a settings file with a certain name Leave the program
Edit	Undo all Undo current page	Reset all settings to the status of the latest reading Reset settings of an active page to the status of the latest reading
Device	R W	Read all settings from Lite-Com Pro Write all settings to Lite-Com Pro
Reports	Create...	Create a report of the headset settings. Select one of the output options; to a selected printer, as a preview on the screen or as an electronic file.
Window	...	Select your preferred version of presenting data on the screen
Help	About...	See version and product range supported by the software

Every reading of a headset opens a new window on the screen. The identification of the headset hardware is shown in the blue bar on top of every window.



Data from any reading can be stored in a unique file in the library “Settings files”.

- **Comment** Text written in this area can preferably be saved in a file together with the settings for later information. It is also presented on the headset report.

Notice: The information is not stored in the headset.

- Use “File” and “Save” or “File” and “Save as” or “Ctrl+S” to save the data. The data from the presently active window will be stored.
- Name and save the file.

7. Program the headset

The sections for programming the headset is presented in separate windows according to the tree structure to the left in the window. (General, VOX, Squelch, Voice/Menu, Channels)



8. See the device information

Under [Device] some overarching information about the attached headset is shown.

- **Model** Connected product model.
- **Firmware version** Actual headset firmware version.
- **Voice version** Actual version of the voice information.
- **Last programmed** Date and time of the latest writing to the headset.
- **Frequency range** Actual frequency range for the radio in the headset.
- **Channel Bandwidth** Actual bandwidth of the radio channels in the headset.
(This information is not displayed for all product versions.)
- **Serial number** Identification of the headset hardware (PCB).
Notice: The number is not the headset's serial number, which is written on the label. It could be noted in the comments.

Device info	
Model:	Lite-Com Pro
Firmware version:	1.1.11
Voice version:	Thu Mar 01 14:34:10
Last programmed:	Not available
Frequency range:	403 - 447 MHz
Channel bandwidth:	12.5/25 kHz
Serial number:	9150000054

Busy channel lockout (BCLO)

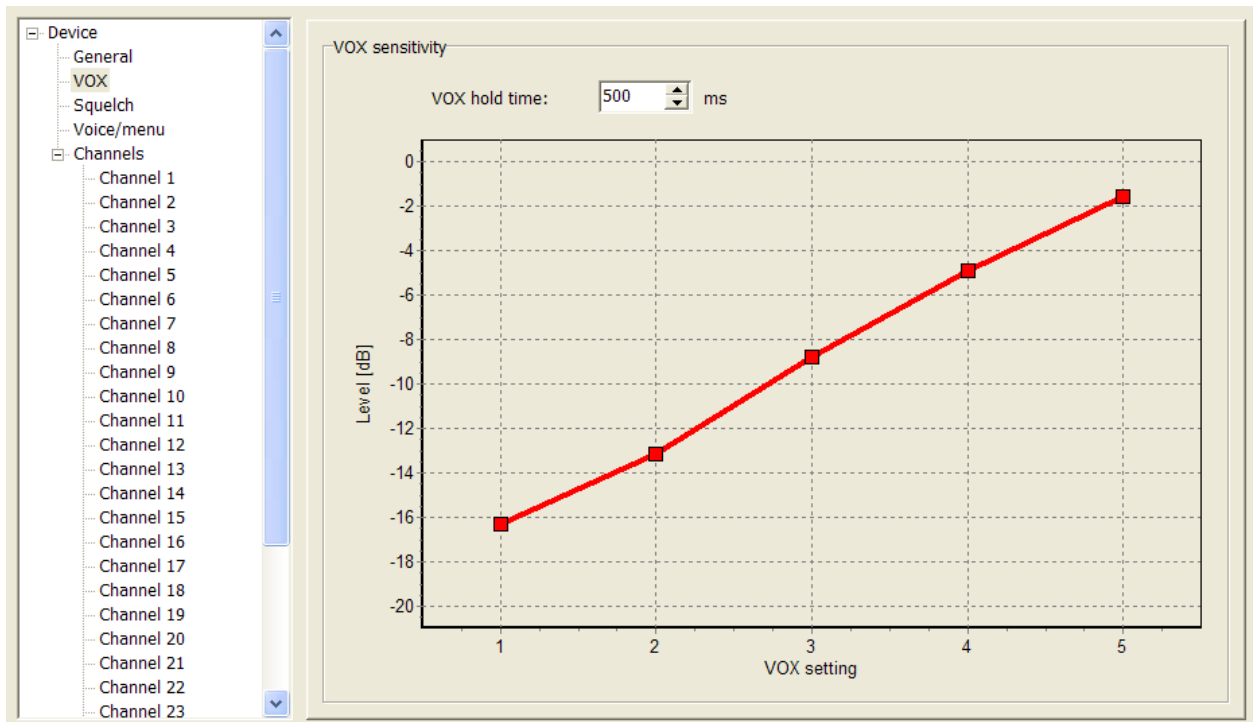
BCLO blocks transmission when there is an incoming signal to the receiver.

- BCLO on PTT** Enable or disable possibility for transmission with PTT when a radio signal is received.
 “Disabled” could be a normal setting if the user should be able to override another transmission by pushing the PTT, for instance for to make an emergency call.
- BCLO on VOX** Enable or disable transmission with VOX when signal is received.
 “Enabled” could be a normal setting if the user should not be able to interfere with another transmission by incidence with a VOX transmission.
- Warning beep** Enable or disable a warning tone when trying to transmit while the frequency is occupied.
 If there is a warning tone, the user has to postpone the wanted transmission and try again.
- Detect mode** Select criteria; “carrier” or “sub channel”, to initiate the function of busy channel lockout.
 “Carrier” is used for not to override other transmissions on the same channel. Notice: Any interference on the channel will block possibility for transmission.
 “Sub channel” is used for excluding interference from machines etc.

Audio levels

- Boom mic type** Adjust basic microphone gain for the actual type of microphone; electret or dynamic.
- Boom mic gain** Fine tune the microphone gain -10 – +10 dB.
- Ext. input gain** Set sensitivity high, mid or low on the external input for adapting cell phones ext. com radios etc.

10. Adjust the VOX



- **VOX sensitivity**

Adjust VOX level by adjusting the positions of the squares on the line to the wanted levels for each step; 0 – 20 dB.

A more negative VOX value makes it easier to open VOX transmissions.

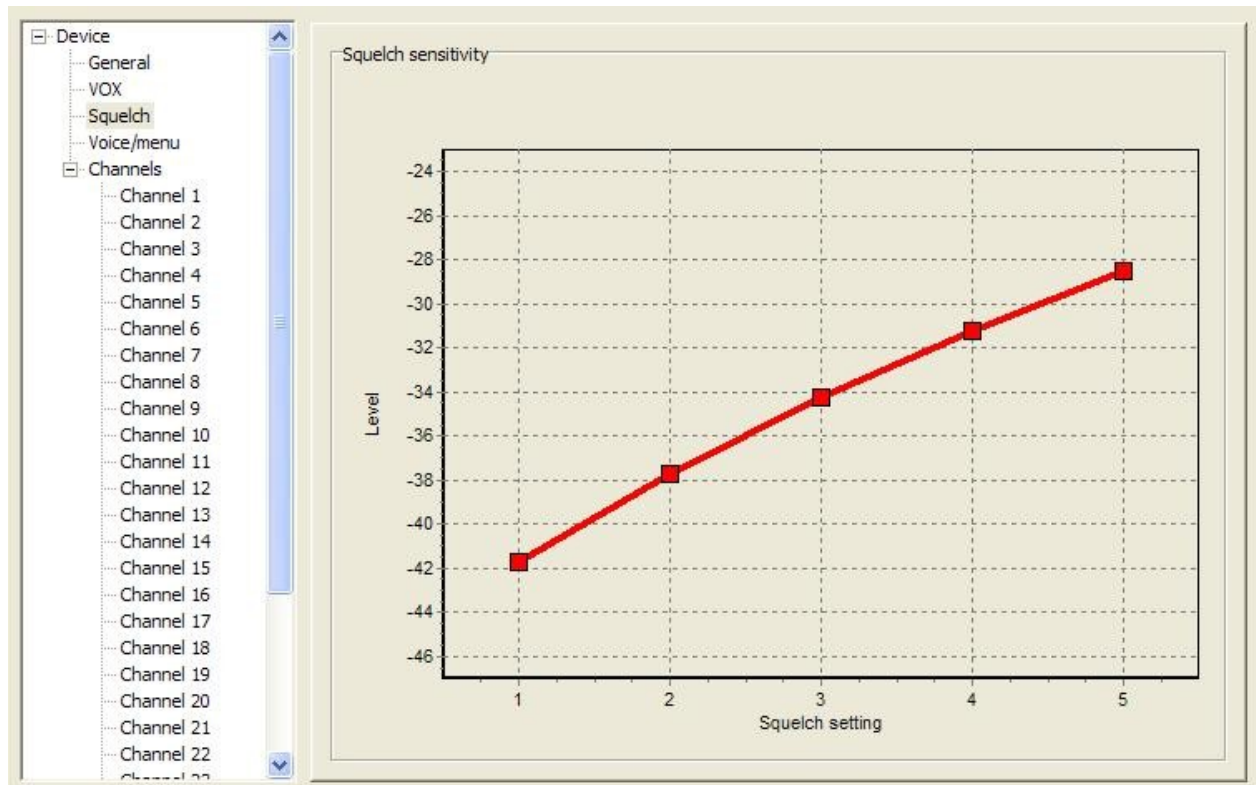
A less negative value is suitable for VOX communication in noisy environments.

- **VOX hold time**

Adjust the time for the VOX to remain open after end of speech. 0 – 5000 ms.

Notice: A hold time of approximately 1000 ms might feel comfortable for an unaccustomed VOX operator.

11. Adjust the squelch



- **Squelch sensitivity**

Adjust squelch level by adjusting the positions of the squares on the line to the wanted levels for each step; -46 – -24 dB.

A more negative value opens the squelch easier.

Use a more negative value for weak long distance signals.

Use a less negative value to keep out interference.

12. Adjust the settings for the voice menu

	Min	Max	Fixed value	Menu enabled
Surround:	1	5	5	<input checked="" type="checkbox"/>
Volume:	Off	7	7	<input checked="" type="checkbox"/>
Channel:			8	<input checked="" type="checkbox"/>
VOX:	Off	5	1	<input checked="" type="checkbox"/>
Squelch:	Off	5	2	<input checked="" type="checkbox"/>
Subchannel:	Subchannel is set per channel on the Channel page			
TX Power:	TX Power is set per channel on the Channel page			

- **Surround**

When the surround sound function is enabled, adjust minimum and maximum settings of the steps; Off – 7.

The sound pressure level of the surround sound is always limited by the level dependent function of the headset.

If the surround sound function is disabled, the sound level of the surround sound can not be changed by the user. Adjust the fixed value for one of the steps; Off – 7.

- **Volume**

When the volume function is enabled, adjust minimum and maximum settings of the steps; Off – 7.

If the volume function is disabled, the volume level can not be changed by the user. Set the fixed value for one of the steps; Off – 7.

NOTICE!

Programmers and users should be advised, that the output limits of the speakers in the Lite-Com Pro headset are safe for levels up through step 7 (equivalent output sound level of up to 89 dBA) for daily 8-hour use, as long as the time spent listening and talking does not exceed 2.5 hours, equally divided between the two modes.

If the time exceeds this value, the user and/or programmer should consult with a qualified hearing conservationist to verify, that the device is being used in a safe manner.

If communicating between Peltor branded products and other brands, receive levels may be higher and could be hazardous!

- **Channel**

When the channel function is enabled, the data for the channels 1 – 30 are set in the Channels menu (see “Channels” below).

If the radio channel function is disabled, the radio operates on only one channel which can not be changed by the user. Adjust the fixed channel number; 1 – 30.

- **VOX**

When the VOX function is enabled, adjust minimum and maximum settings of the VOX steps; Off – 5.

If the VOX function is disabled, the VOX level can not be changed by the user. Adjust the fixed value for one of the steps; Off – 5.

- **Squelch**

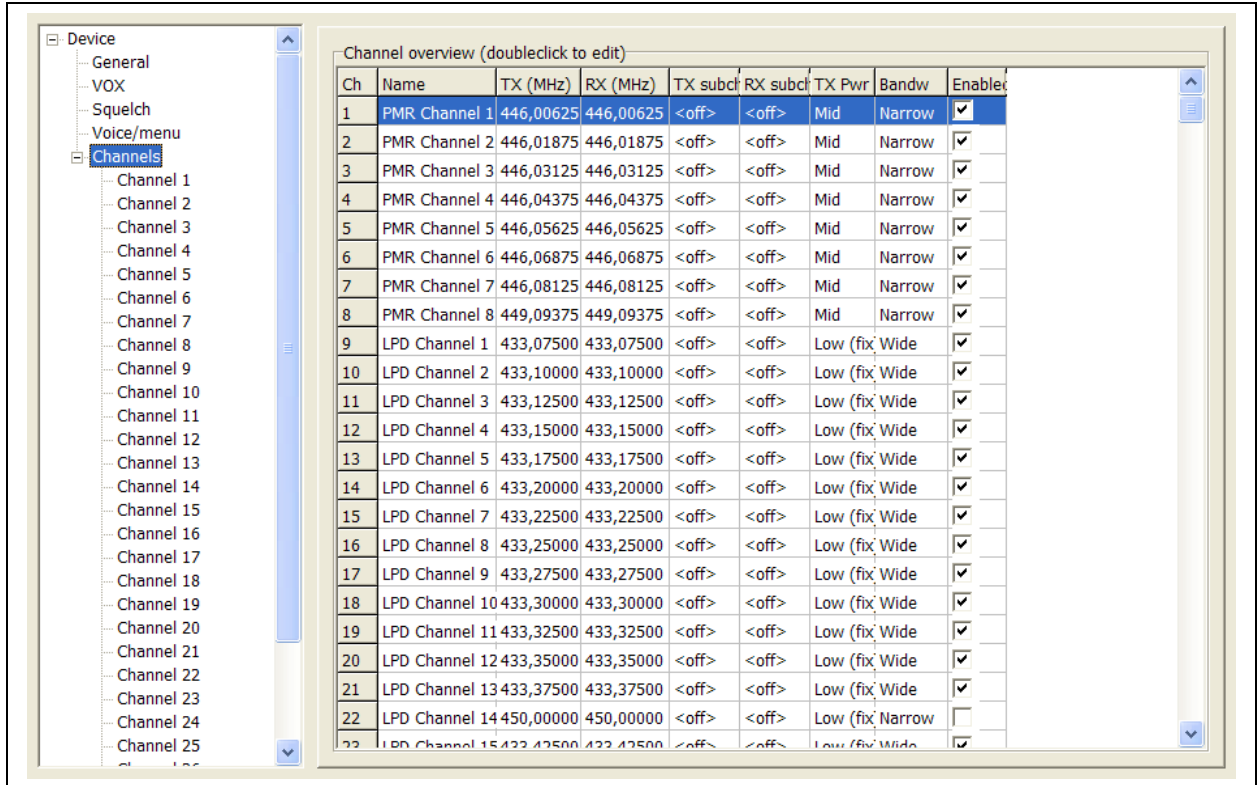
When the squelch function is enabled, adjust minimum and maximum settings of the steps; Off – 5.

If the squelch function is disabled, the squelch level can not be changed by the user. Adjust the fixed value for one of the steps; Off – 5.

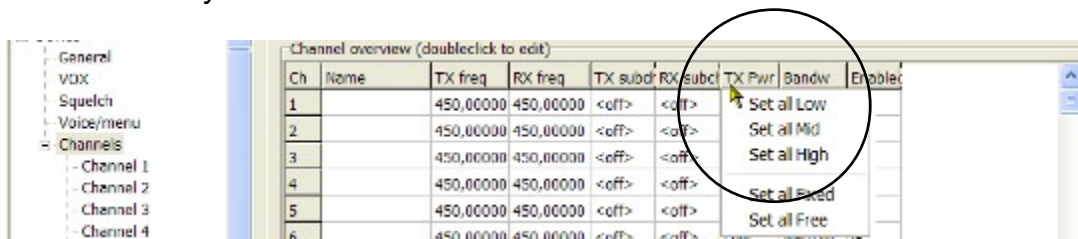
Either of the menu functions can be disabled by using the software programme. When a function is disabled it is eliminated from the voice menu in the headset.

13. Specify the radio channels

- Select “Channels” to get an overview of the available frequency channels of the radio.



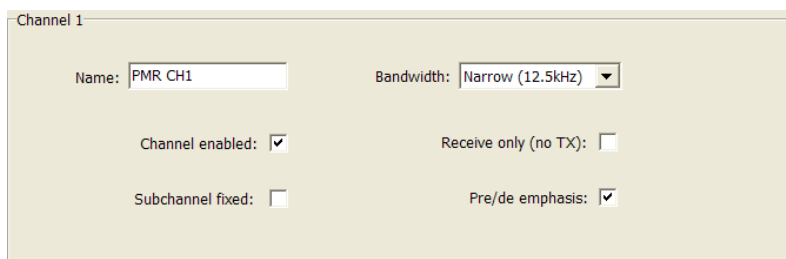
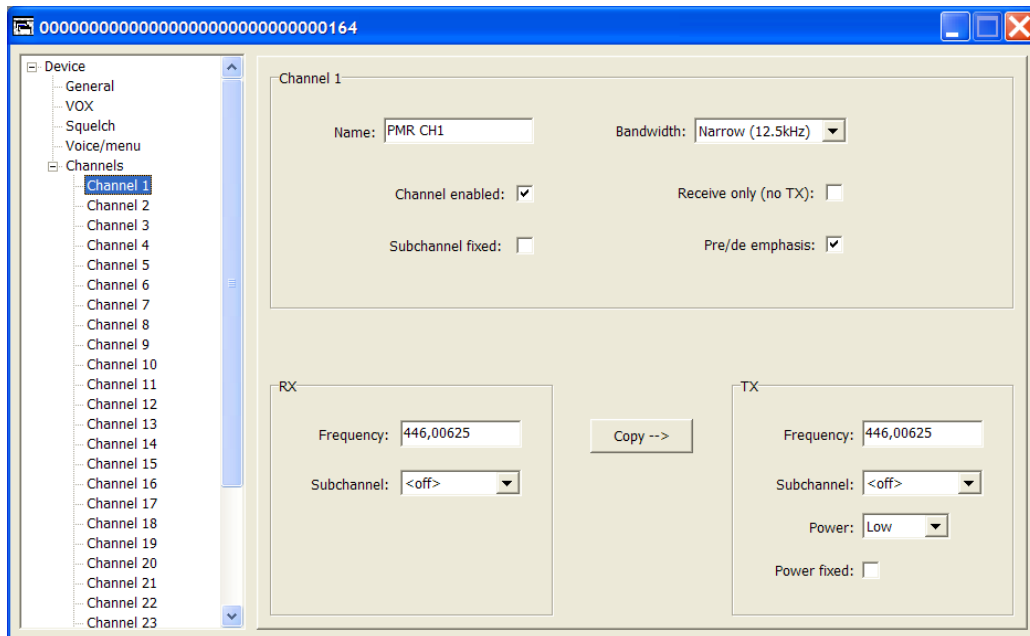
By positioning the cursor on the top line of the channel overview picture and pressing the mouse button, multiple changes can be done for all the channels at the same time. All channel names and sub channels can be cleared, equal settings can be made for output power and band width and all channels can be enabled or disabled simultaneously.



Separate channel settings

- Select a channel in the menu tree or “double click” at the row for the channel in the picture on the screen.

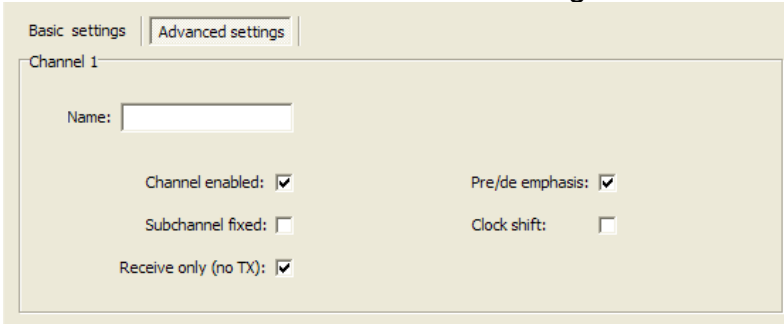
Each channel is shown in a separate window.



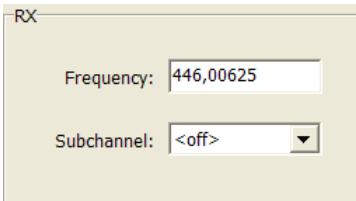
- **Name** Possibility to name the actual channel.
The text will be saved in the headset memory.
- **Channel enabled** Choose whether the actual channel should be used or not.
- **Sub channel** (Selective squelch) There are 38 CTCSS tone codes and 83 DCS codes.
- **Receive only** Mark if the channel will be a listen-only channel.

- **Bandwidth** Choose either “Narrow” for 12,5 kHz or “Wide” for 25 kHz channels.

For the 20 kHz version there is no setting for the bandwidth.



- **Sub channel fixed** Mark if the sub channel should be fixed.
- **Pre/de emphasis** Pre/de emphasis is a noise reduction process. In transmission mode the treble is increased and in receiving mode it is decreased. Choose whether the function should be used or not.
- **Clock shift** Mark if the micro processor frequency should be adjusted for to not cause interference in the receiver.
- **RX: Receiver**



- **Frequency** Set receiver frequency within the range of the actual product.
- **Sub channel** Sub channel is a common expression for selective squelch. Select one of the settings for the receiver; Off, CTCSS tone or DCS code according to the tables below.



- **Copy** Copy the transmit frequency and sub channel settings from RX to TX.
- **Offset** Choose the appropriate separation of the TX/RX

frequencies.

TX: Transmitter



TX

Frequency: 446,00625

Subchannel: <off>

Power: Low

Power fixed:

- **Frequency** Select a transmit frequency within the range of the actual product.
- **Sub channel** “Sub channel <off>” means use of the transceiver “open” without selective squelch. For communication with selective squelch, chose one of the available CTCSS tones or DCS codes.
- **Power** Select low, mid or high output power for the transmission. Low = 10 mW, mid = 20 mW and high is 200 mW.

Try with lowest possible output, to increase usage time.
- **Power fixed** Mark if the output power level should be fixed. The menu voice for power level is out of use at fixed power.

Squelch Tones and Codes

CTCSS (Continuous Tone Coded Squelch System)

1. 67.0	8. 88.5	15. 110.9	22. 141.3	29. 179.9	36. 233.6
2. 71.9	9. 91.5	16. 114.8	23. 146.2	30. 186.2	37. 241.8
3. 74.4	10. 94.8	17. 118.8	24. 151.4	31. 192.8	38. 250.3
4. 77.0	11. 97.4	18. 123.0	25. 156.7	32. 203.5	
5. 79.7	12. 100.0	19. 127.3	26. 162.2	33. 210.7	
6. 82.5	13. 103.5	20. 131.8	27. 167.9	34. 218.1	
7. 85.4	14. 107.2	21. 136.5	28. 173.8	35. 225.7	

DCS (Digitally Coded Squelch)

39. 023	53. 114	67. 174	81. 315	95. 445	109. 631
40. 025	54. 115	68. 205	82. 331	96. 464	110. 632
41. 026	55. 116	69. 223	83. 343	97. 465	111. 654
42. 031	56. 125	70. 226	84. 346	98. 466	112. 662
43. 032	57. 131	71. 243	85. 351	99. 503	113. 664
44. 043	58. 132	72. 244	86. 364	100. 506	114. 703
45. 047	59. 134	73. 245	87. 356	101. 516	115. 712
46. 051	60. 143	74. 251	88. 371	102. 532	116. 723
47. 054	61. 152	75. 261	89. 411	103. 546	117. 731
48. 065	62. 155	76. 263	90. 412	104. 565	118. 732
49. 071	63. 156	77. 265	91. 413	105. 606	119. 734
50. 072	64. 162	78. 271	92. 423	106. 612	120. 743
51. 073	65. 165	79. 306	93. 431	107. 624	121. 754
52. 074	66. 172	80. 311	94. 432	108. 627	

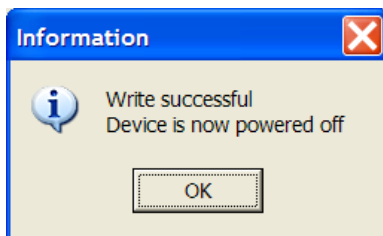
14. Write all settings to headset memory

When all settings are made, the data from the selected window should be transferred to the attached Lite-Com Pro headset.

- Use menu [Device] and [Write all] or click on [W] symbol!



When the writing procedure is finished, the attached headset is automatically turned off.



For repeated programming of equal settings in more headsets and for “data safety reasons”, every programming of a headset can be stored in a unique file in the library called “Settings files”.

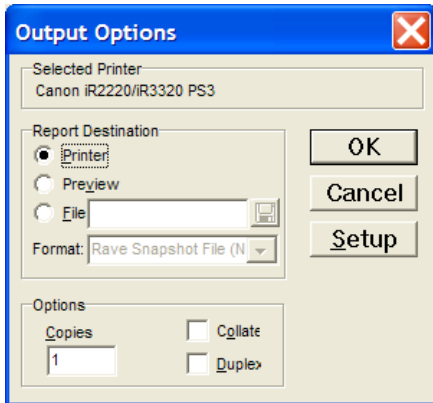
- Use “File” and “Save” or “File” and “Save as” or “Ctrl+S” to save the data.
- Select your preferred name of the file.

15. Create a report of the headset settings

Headset settings can be shown in a report.



Create a headset report and store in your preferred way; on paper [Printer], on the screen [Preview] or in a data file. The name of a file is optional.



PELTOR®

Headset settings
Print date: 2009-11-13

Model: Lite-Com Pro
 Firmware version: 1.1.6
 Frequency range: 430 - 470 MHz
 Last programmed on: Not available
 Serial number: 9180000097
 File comment: This headset is only for test purposes

Ch	Name	TX freq	RX freq	TX subch	RX subch	Power	Enabled
1	Channel A	466,50000	456,50000	79.7 Hz	79.7 Hz	Mid	Enabled
2			450,00000			Low (fix)	
3			450,00000			Low (fix)	
4			450,00000			Low (fix)	
5			450,00000			Low (fix)	
6			450,00000			Low (fix)	
7			450,00000			Low (fix)	
8			450,00000			Low (fix)	
9			450,00000			Low (fix)	
10			450,00000			Low (fix)	
11			450,00000			Low (fix)	
12			450,00000			Low (fix)	
13			450,00000			Low (fix)	
14			450,00000			Low (fix)	
15			450,00000			Low (fix)	
16			450,00000			Low (fix)	
17			450,00000			Low (fix)	
18			450,00000			Low (fix)	
19			450,00000			Low (fix)	
20			450,00000			Low (fix)	
21			450,00000			Low (fix)	
22			450,00000			Low (fix)	
23			450,00000			Low (fix)	
24			450,00000			Low (fix)	
25			450,00000			Low (fix)	
26			450,00000			Low (fix)	
27			450,00000			Low (fix)	
28			450,00000			Low (fix)	
29			450,00000			Low (fix)	
30			450,00000			Low (fix)	